

Modernization. Updates. Network security.

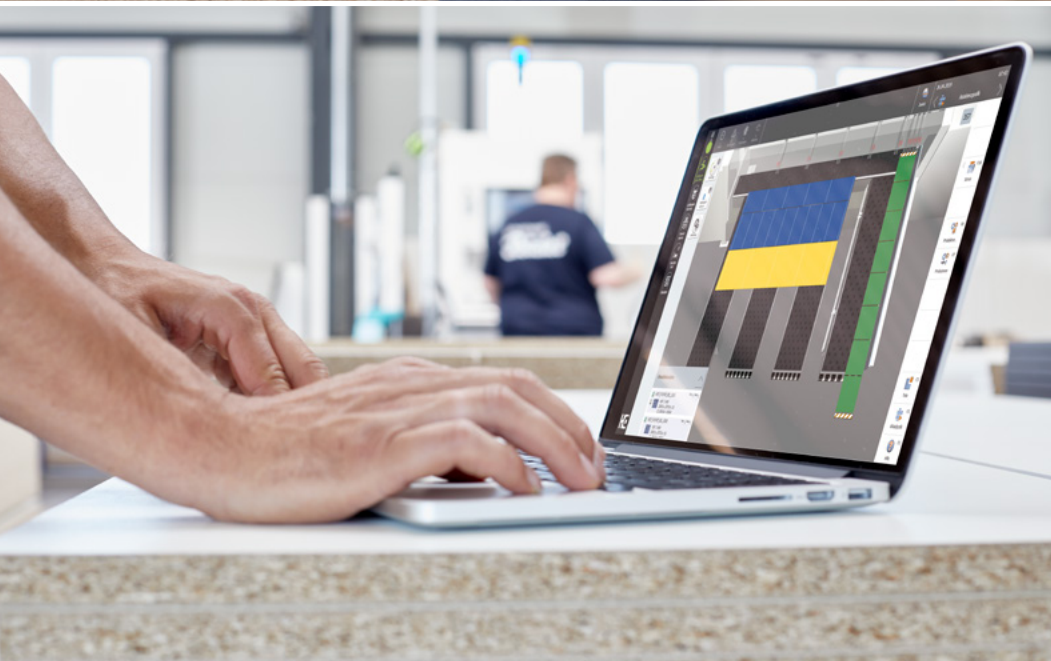
HE HOMAG

Upgrade to Windows 10

Even if we continue to support older systems, updating is worthwhile – Focus: Saw

YOUR SOLUTION





"Never change a working system!" – but sometimes it makes sense

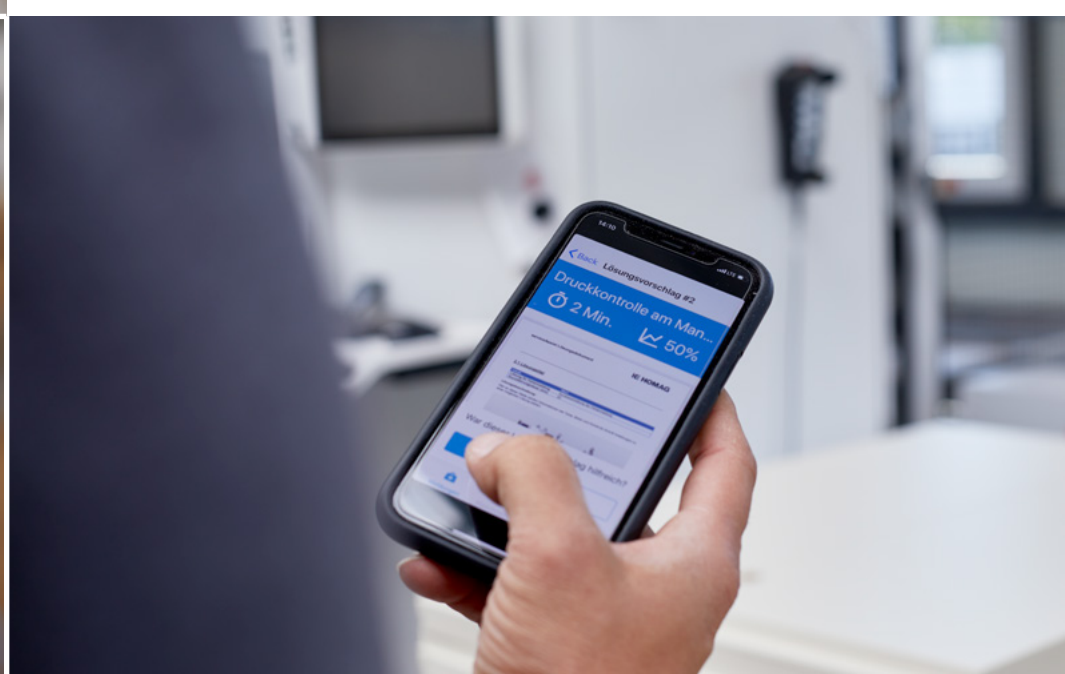
On January 14, 2020, Microsoft discontinued support for Windows 7. The end of service life specified by Microsoft for Windows 7 certainly doesn't mean that functionality is limited for your HOMAG machine supplied with this or an older operating system. Over the coming years, we will continue to provide you with the necessary updates for the respective machine software.

Your production and the smooth running of the plant are our top priority. But there are various configurations, and it makes sense to upgrade to Windows 10 straightaway.

Curious?

On the following pages, we explain the specific advantages, why it makes sense and what specific solutions look like for a simple, quick change.

YOUR SOLUTION



From good to better: Why you should upgrade to Windows 10...

Windows 10 offers you the best compatibility, increased efficiency and, above all, state-of-the-art performance. Upgrading your operating system to Windows 10 makes your working day even more efficient, makes other current software solutions easier to integrate and helps you achieve your daily goals.

We have tailor-made upgrades for your machine-software configuration to help you

1. upgrade quickly and easily

and therefore

2. manufacture more quickly and more efficiently



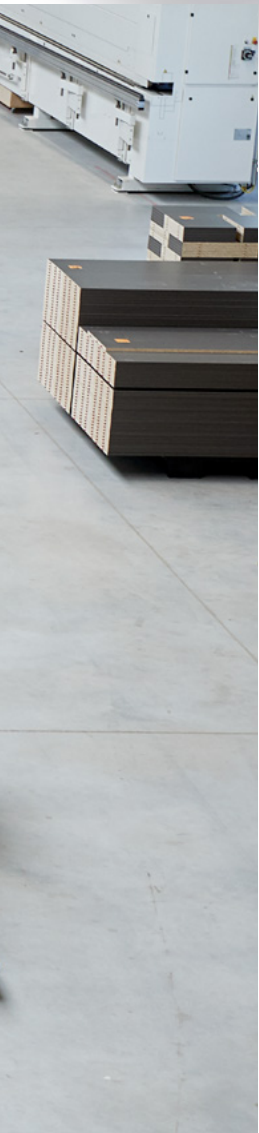


Our recommendation: Choose Windows 10 now and benefit from our modernization packages for your HOMAG machine

Our specially developed modernization packages for your system control – in conjunction with Windows 10 – enable your company to take full advantage of the benefits of digital transformation, with maximum security. In addition, by upgrading to a new CADmatic version, you get modern features and functions that make your daily work even easier, faster and more transparent.

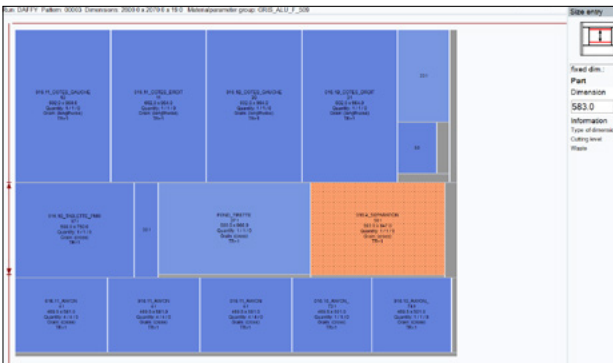
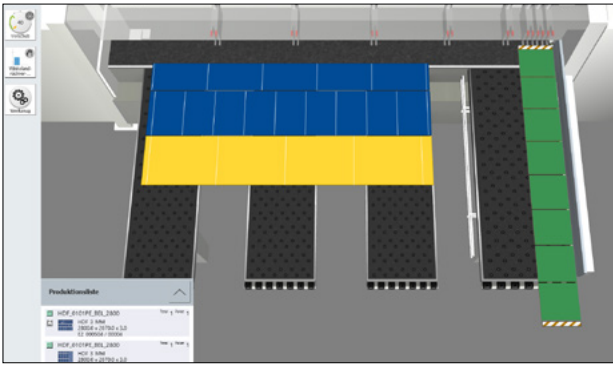
The advantages of Windows 10 at a glance:

- Easy use thanks to proven operating system components
- Optimal security: Windows Defender continuously protects you from malware, viruses, and other security threats
- State-of-the-art software: Windows 10 Enterprise LTSC provides you with security updates over a long period of time (at least 10 years) and has premium features that make your working day even more effective



Modernization packages at a glance:

Your modernization package for saws with CADmatic 4.5, 5.0 or 5.1



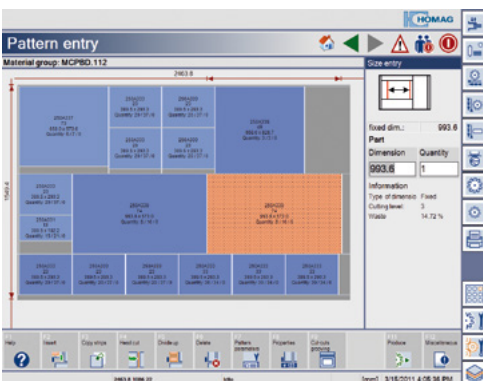
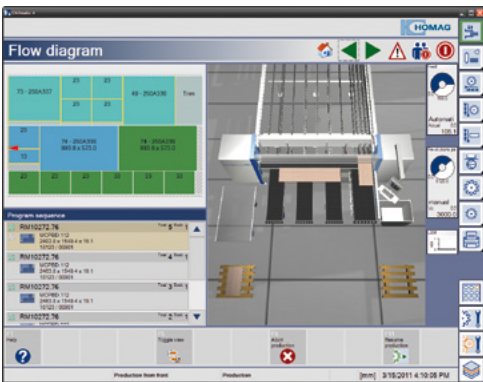
Your system...

- Windows 10-compatible hardware
- Non-Windows 10-compatible hardware

...our matching update:

- Customer-specific Windows 10 upgrade configuration via USB
- CADmatic version 5.1* (if not already available)
- New and fully installed computer including Windows 10 operating system
- Mounting bracket for door mounting
- CADmatic version 5.1* (if not already available)

Your modernization package for saws with CADmatic 4.1, 4.0 or 3.0 and Beckhoff (TwinCAT) PLCs



Your system...

- Windows 10-compatible hardware
- Beckhoff (TwinCAT) PLC
- Non-Windows 10-compatible hardware
- Beckhoff (TwinCAT) PLC

...our matching update:

- Customer-specific Windows 10 upgrade configuration via USB
- CADmatic version 4.1** (if not already available)
- Display replacement: New TFT touch monitor when upgrading to a new CADmatic version***
- New and fully installed computer including Windows 10 operating system
- Mounting bracket for door mounting
- CADmatic version 4.1** (if not already available)
- Display replacement: New TFT touch monitor when upgrading to a new CADmatic version***

Your modernization package for single saws with CADmatic 3.0 or older and B&R PLC



Your system...

- Non-Windows 10-compatible hardware

...our matching update:

- New and fully installed computer including Windows 10 operating system
- Mounting bracket for door mounting
- CADmatic version 4.1
- Completely new free-standing control panel with 24" touch monitor
- New Beckhoff PLC incl. hardware modules

* For cutting optimization, at least ProfiT) V11 or WIN10-compatible CadPlan is required. We are happy to offer both separately.

** CADmatic 4.0 must be updated to CADmatic 4.1. CADmatic 3.0 does not.

*** With SAWTEQ B-200 up to 2008 it is not possible to upgrade to a touchscreen monitor or CADmatic 4

Are you interested? Nothing could be easier...

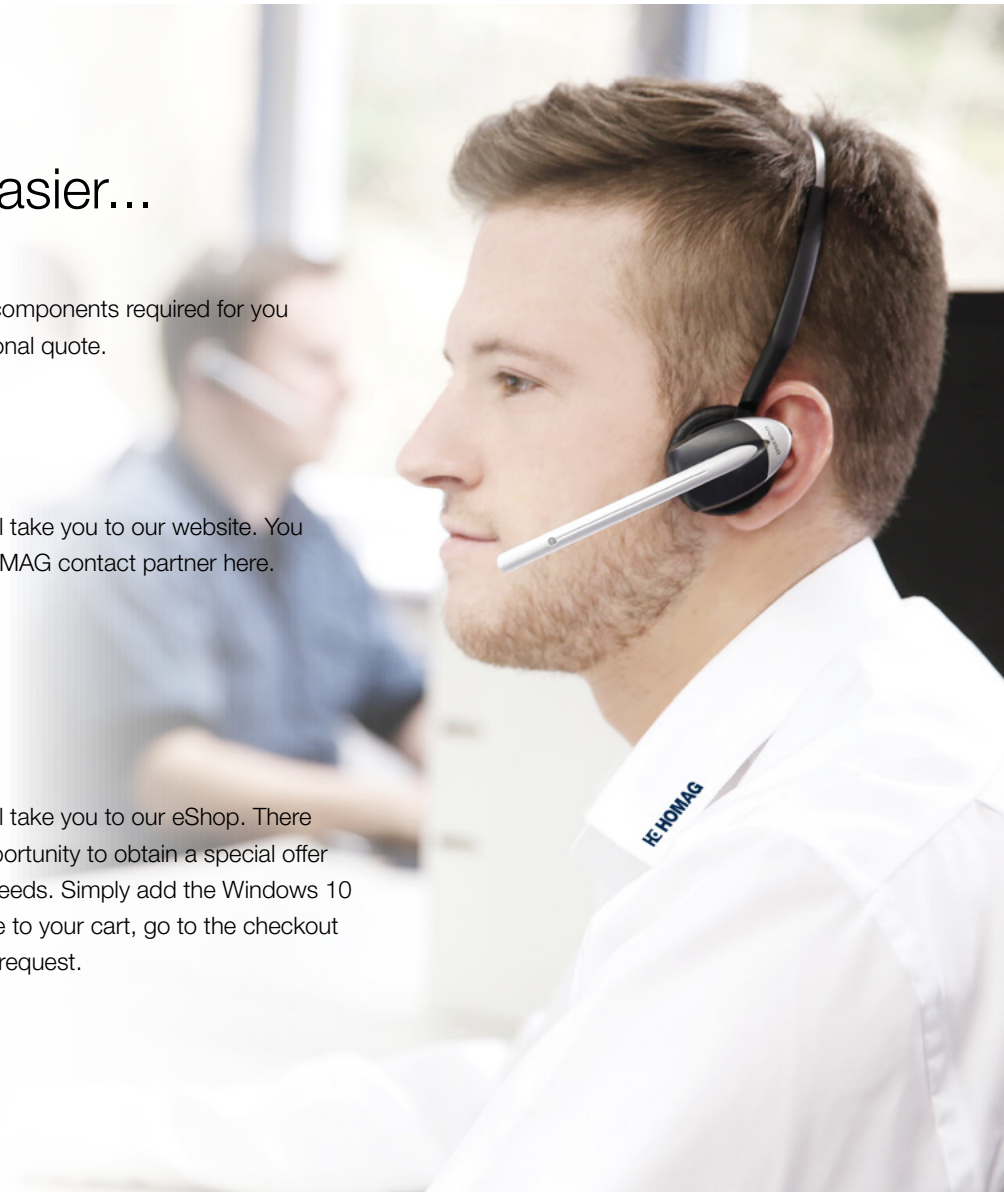
Your contact person knows all the package components required for you and will be happy to provide you with a personal quote.



This [QR code](#) will take you to our website. You can find your HOMAG contact partner here.



This [QR code](#) will take you to our eShop. There you have the opportunity to obtain a special offer tailored to your needs. Simply add the Windows 10 upgrade package to your cart, go to the checkout and submit your request.



HOMAG Group AG

info@homag.com

www.homag.com



YOUR SOLUTION